




FAIRFIELD RETAIL
PARTNERS

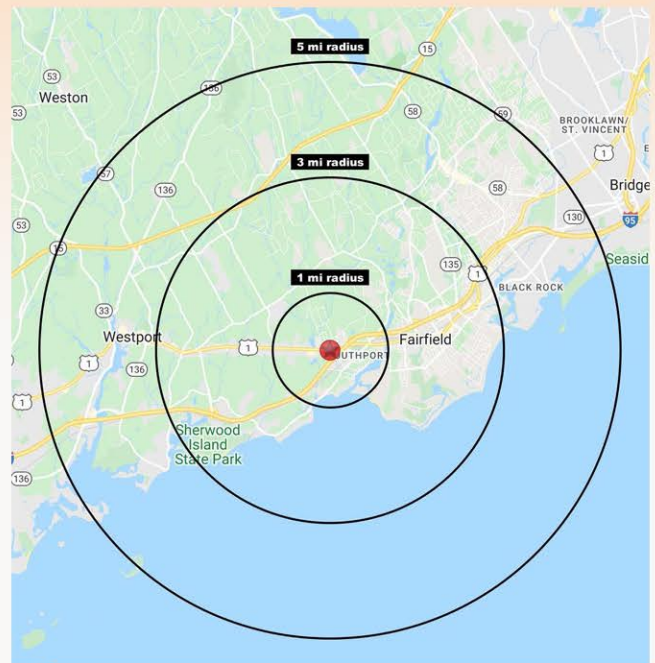
FOR LEASE - SIGNATURE RETAIL

3449 POST Rd. (US 1)

SOUTHPORT (FAIRFIELD), CT



- *3,045 sf - Highly Visible Corner Retail on Post Rd.
- *Incredible Trade Area - Avg Household Income - \$300,000
- *Serves Fairfield County's most affluent neighborhoods - Fairfield Southport Westport
- *Access to  Exit 19 - over 109,000 cars per day
- *Near Shake Shack/Michaels/HomeGoods/Panera/Equinox
- *Ideal For Retail/Financial/Healthcare/Food To Go



2021 Demographics

	1 Mile	3 Mile	5 Mile
Population	5,152	36,814	97,019
Avg. HH Inc.	\$309,875	\$299,168	\$230,100
Daytime Pop.	6,883	30,303	69,470

Contact Exclusive Agents: Fairfield Retail Partners LLC

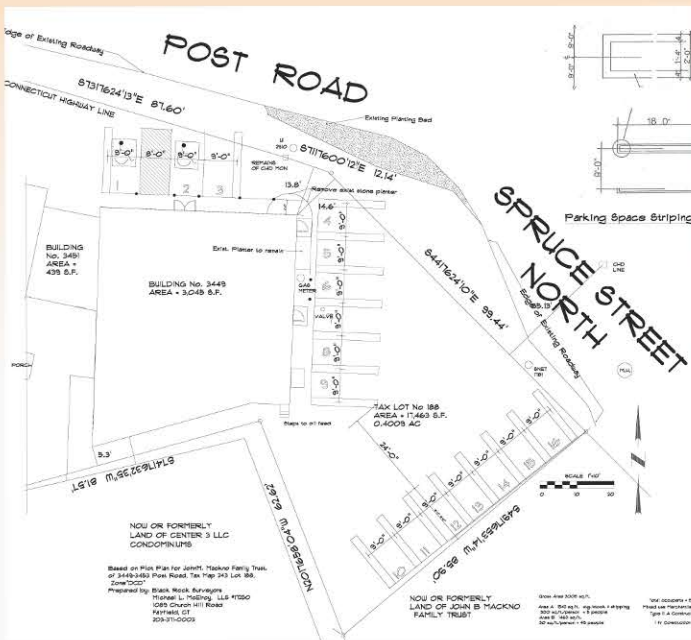
Tom Zuber 914.282.4117
tzuber@fairfieldretail.com

Mike Shanahan 203.470.4667
mshanahan@fairfieldretail.com

4 RESEARCH DR, STE 402, SHELTON CT 06484 | 203.242.3033 | WWW.FAIRFIELDRETAIL.COM

Information contained herein, while not guaranteed, is from sources we believe reliable. Price, terms, and information subject to change.

3449 Post Rd. Southport, CT



Contact Exclusive Agents for details:

203.242.3033

www.fairfieldretail.com

